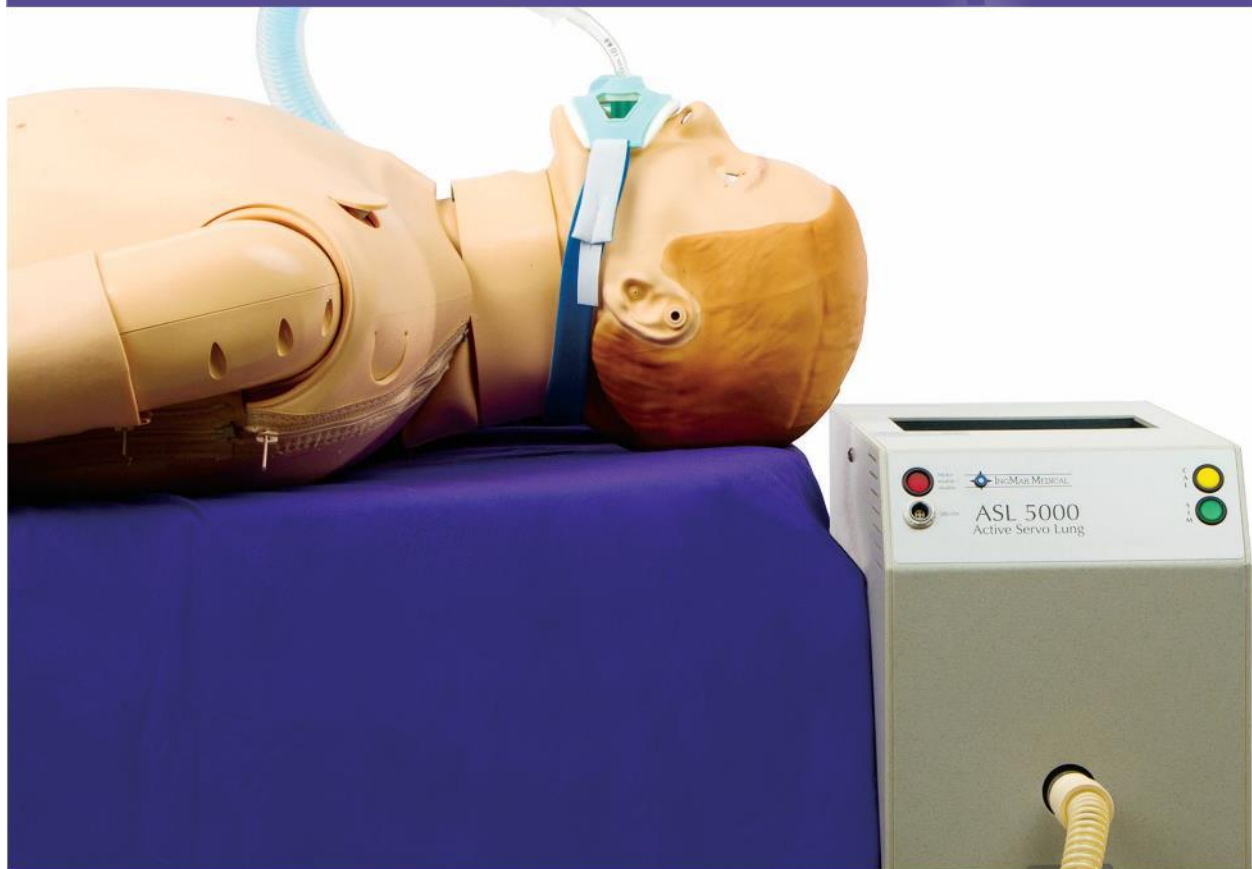


ASL 5000™ Lung Solution for SimMan®
420-11955

Quick Connect Guide



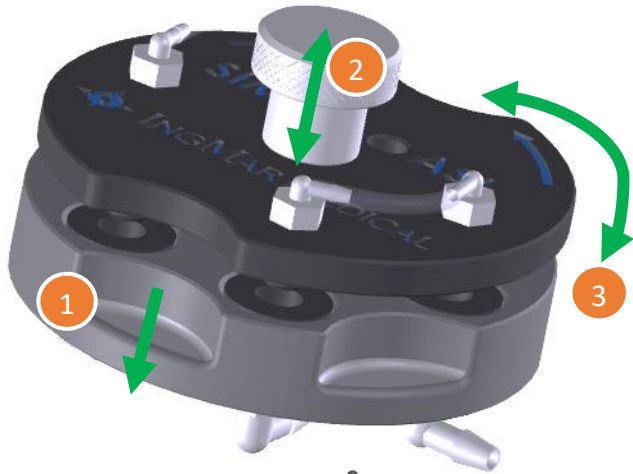
Laerdal
helping save lives

IngMar Medical, LLC is not responsible for translations of its proprietary manuals or guides

Document History

Revision History	Date	Authors
Rev. 1	6/30/2022	Brad Whitfield

Hardware setup

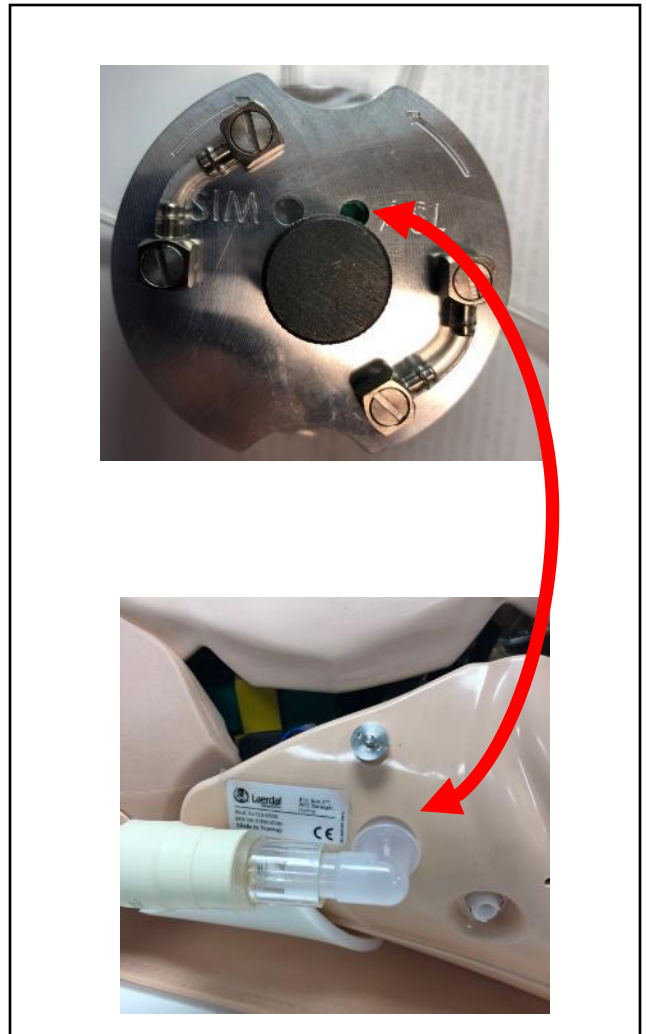


SimMan® mode

Selector Control:

1. Hold bottom of selector plate with thumb and finger
2. Pull top of selector plate up (do not unscrew knob)
3. Rotate top selector plate to ASL

ASL mode



Important Notice

The IngMar Medical, LLC Lung Solution includes the ASL 5000™ Breathing Simulator and the Lung Adapter kit. Prior to starting the ASL 5000™ lung, a working Ethernet connection must be established. This can be from the internal SimMan® router, a stand-alone router, or a facility network. If the ASL 5000™ is powered before a connection is available, the system will not obtain an IP address and will not connect.

The instructions below are based on the order of operations that MUST be followed for a successful connection. Once settings are complete, they are stored in memory and do not need to be reconfigured.

I. Connection to SimMan 3G Plus Using ASL ID

Note: Before connecting ASL, ensure that ASL 5000 plug-in is installed and LLEAP software is up to date.

1. Connect an Ethernet cable from ASL 5000™ to a numbered port on an external router that SimMan 3G plus is configured to
OR
2. Connect an Ethernet cable from ASL 5000™ to a network (via wall jack, for example) that SimMan 3G plus is configured to

Note: PC, ASL, and SimMan 3G Plus all must be on same network to communicate with each other.



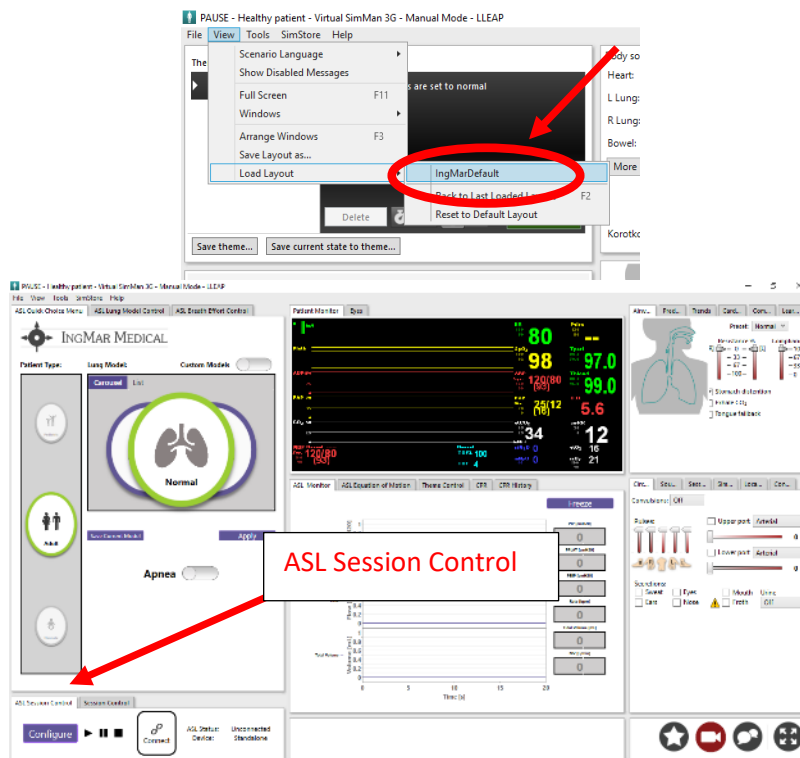
OR



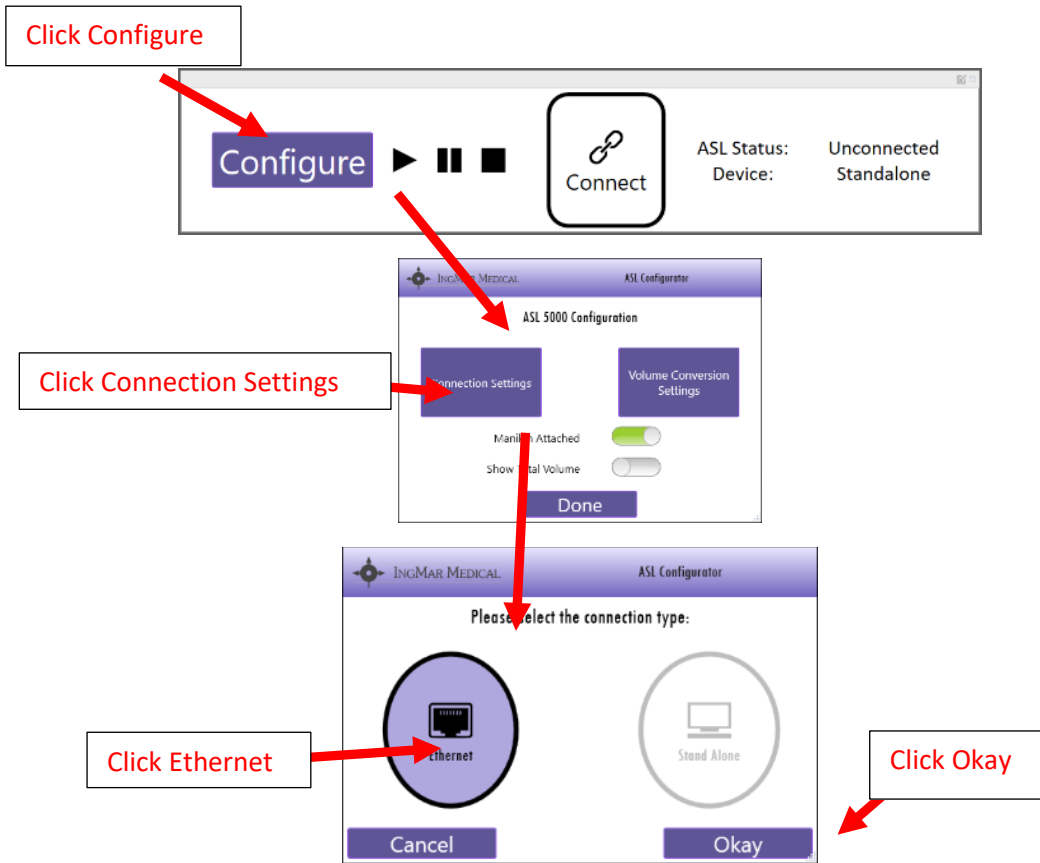
3. Turn the SimMan® power ON and wait until the system has completed its booting process
4. **AFTER** the SimMan® is breathing and its eyes are blinking, turn on the ASL 5000™



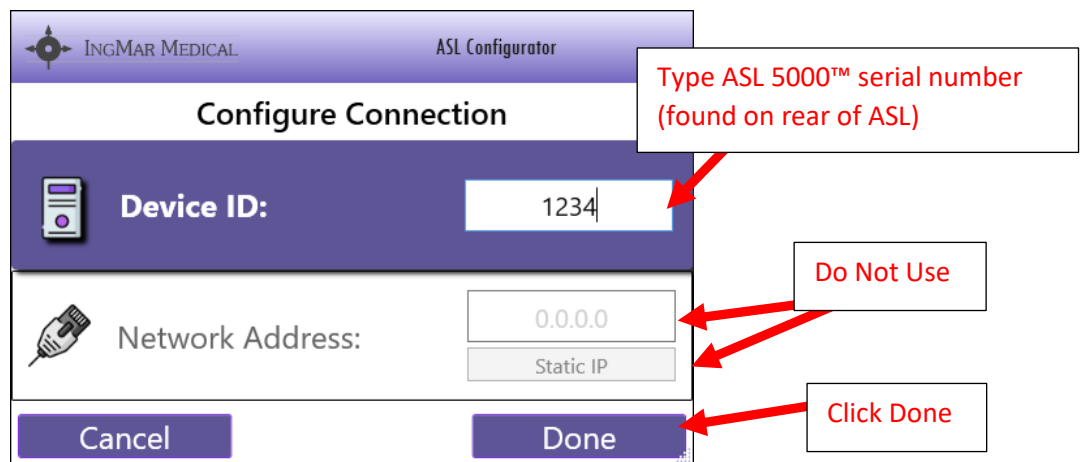
5. After the red light on the front of the ASL is OFF (~30 seconds), open the LLEAP
6. From the View menu, open the IngMarDefault layout to view the five (5) ASL windows
7. Locate the *ASL Session Control* tab which will share the window with LLEAP's *Session Control*



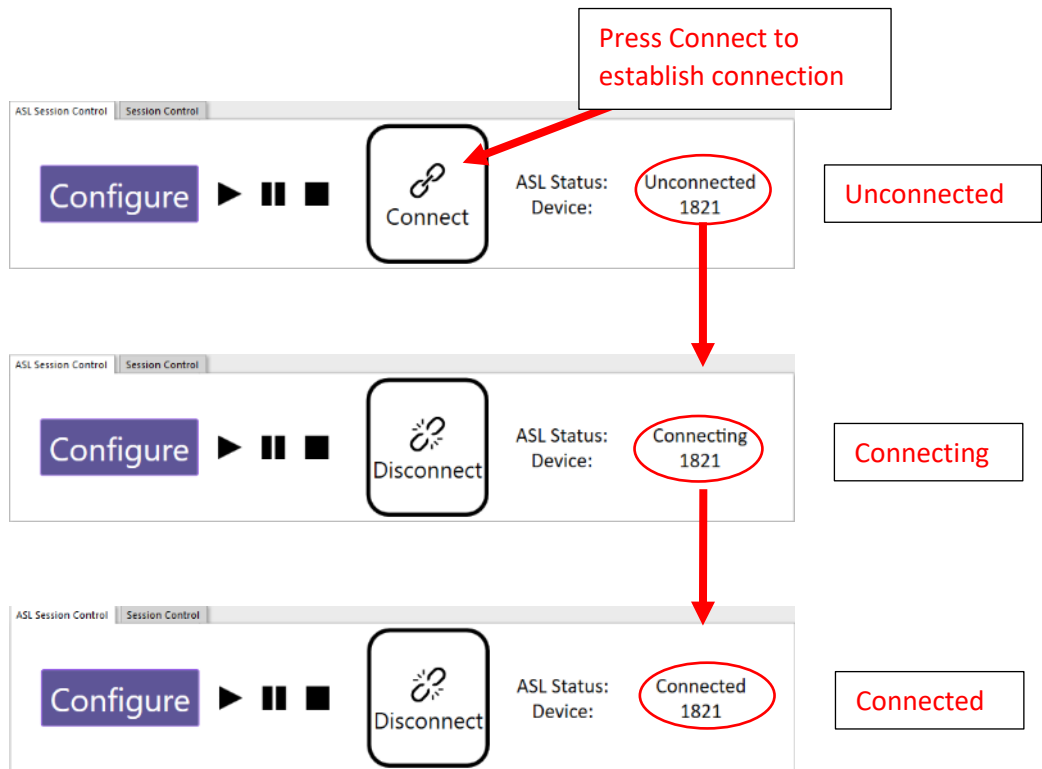
8. Configure the ASL 5000™ connection Settings in the *ASL Session Control* window



9. Click **Device ID:**
10. Type the ASL serial number into the **Device ID:** field
11. Ignore the **IP:** field and the **Static IP** button
12. Click Done



13. Complete the connection

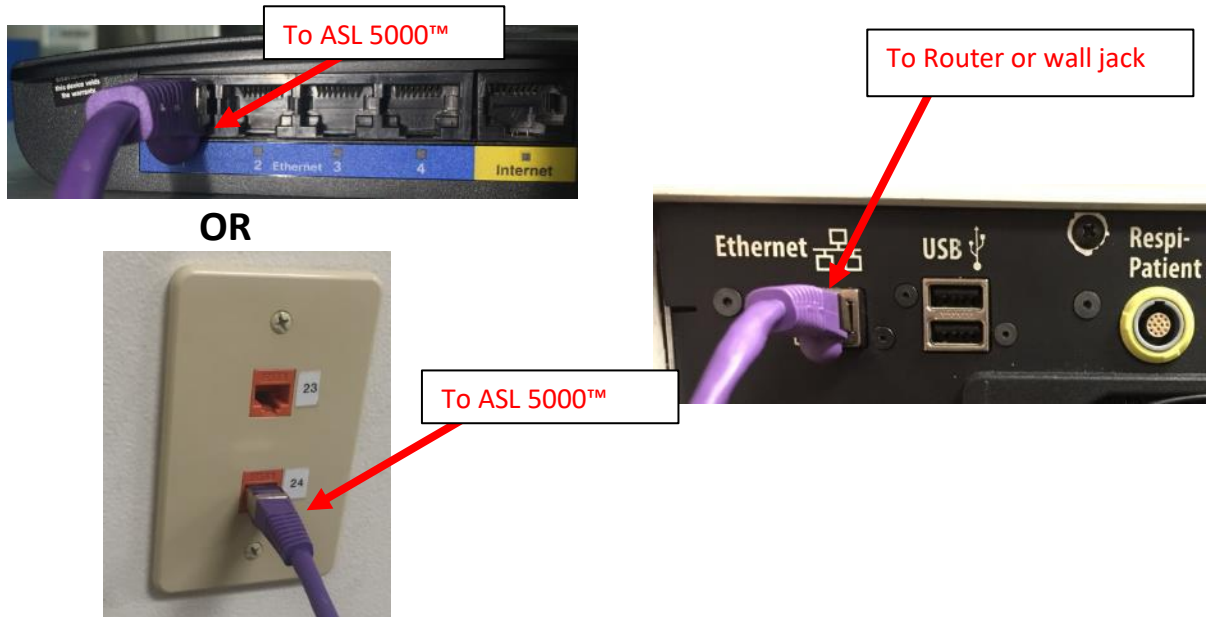


- 14. The ASL 5000™, when connected, makes an audible “wiggle” as part of its initialization
- 15. On the “ASL Session Control” or LLEAP “Session Control” windows, click the ► button to start a simulation

II. Connection to SimMan 3G Plus Using IP Address

NOTE: In some configurations, the customer may require all devices on their network be given specific IP addresses. Once the IP address is known, follow the steps below for a successful connection.

1. Connect an Ethernet cable from ASL 5000™ to a numbered port on an external router
OR
2. Connect an Ethernet cable from ASL 5000™ to a network (via wall jack, for example)

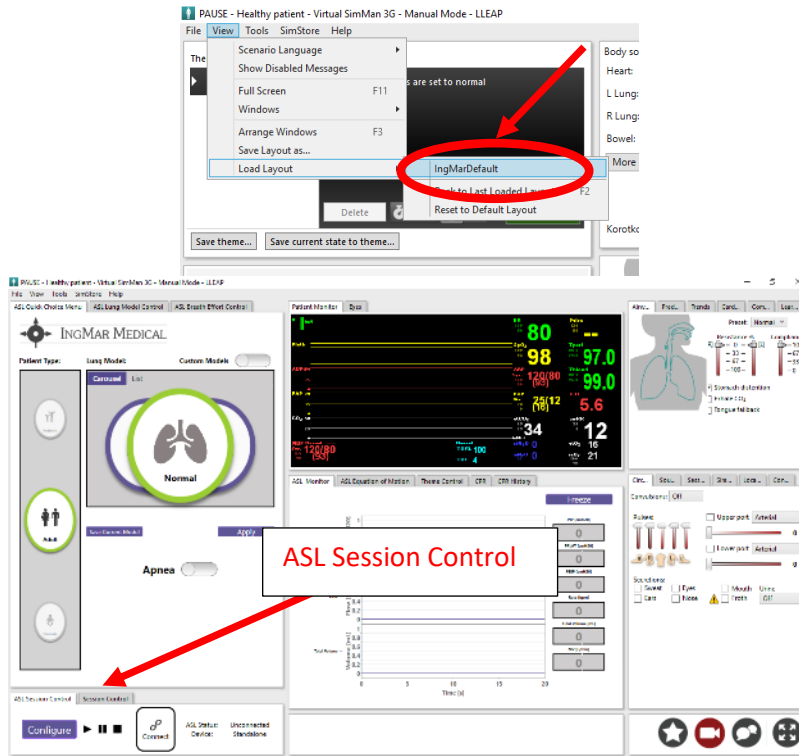


3. Turn the SimMan® power ON and wait until the system has completed its booting process
4. **AFTER** the SimMan® is breathing and its eyes are blinking, turn on the ASL 5000™

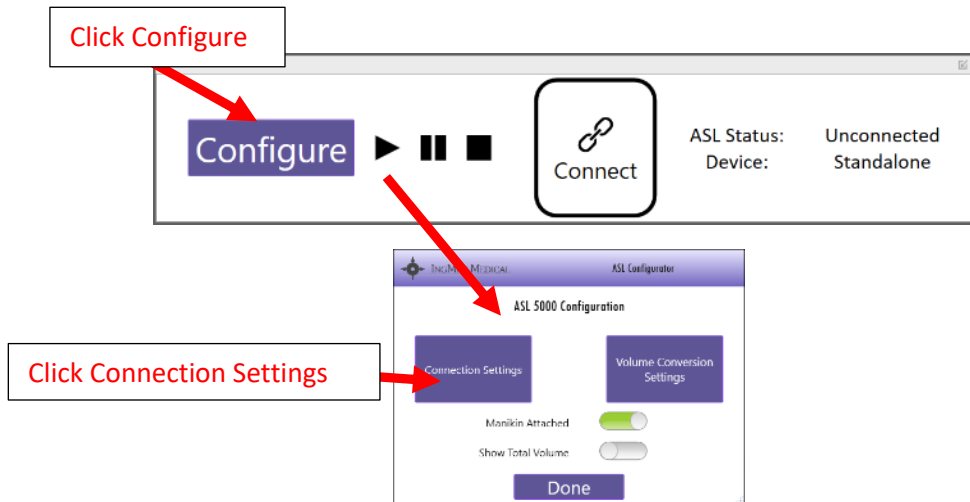


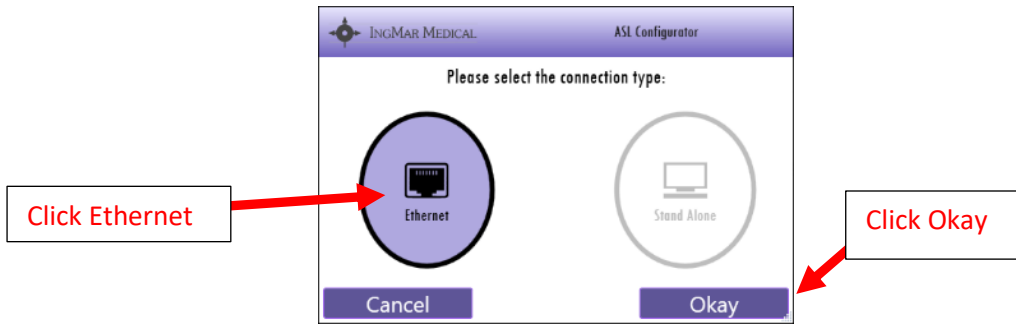
5. After the red light on the front of the ASL is OFF (~30 seconds), open the LLEAP software in Manual Mode
6. From the View menu, open the IngMarDefault layout to view the five (5) ASL windows

- Locate the *ASL Session Control* tab which will share the window with LLEAP's *Session Control*

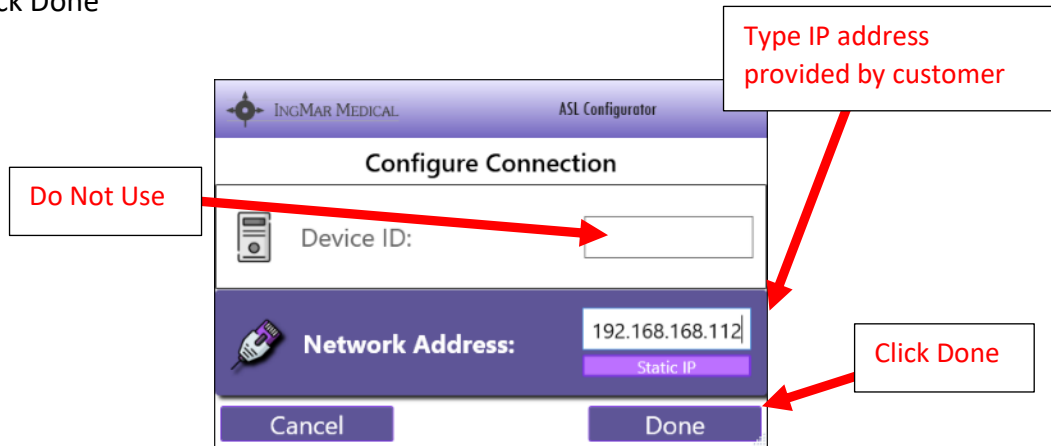


- Configure the ASL 5000™ connection settings in the *ASL Session Control* window

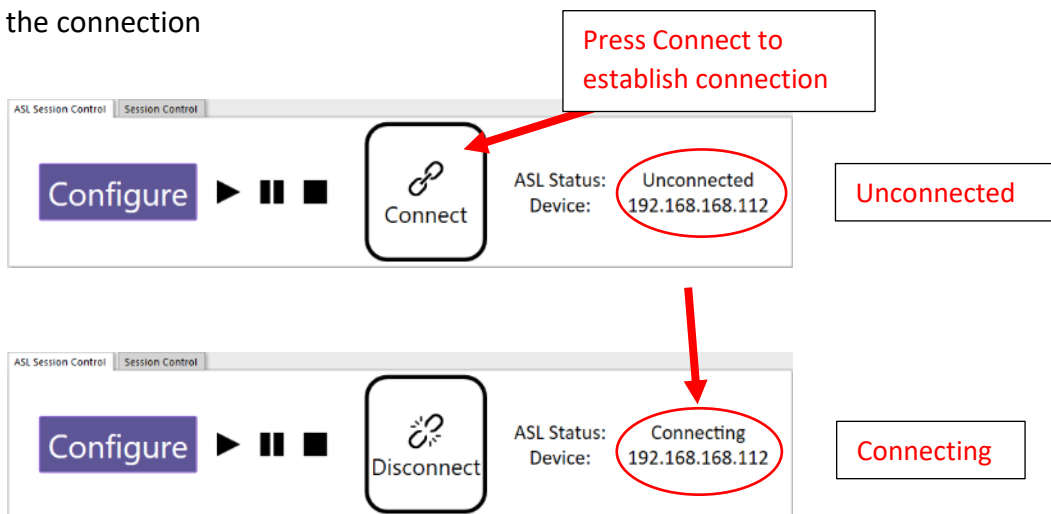


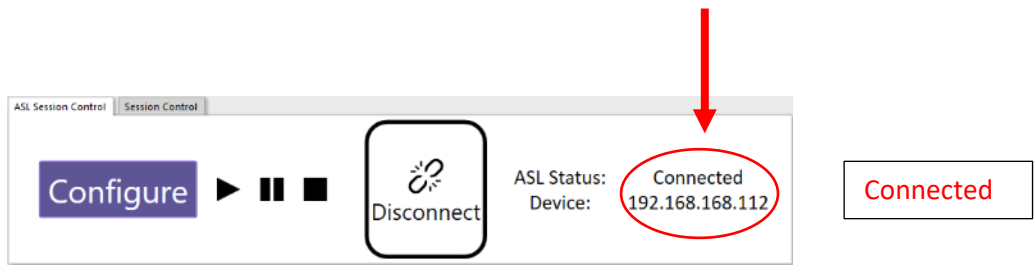


9. Make sure the switch is set to **Use IP**
10. Type the IP address provided by the customer into the **IP:** field
11. Ignore the **ID:** field and ignore the *Static IP Config* button
12. Click Done



13. Complete the connection



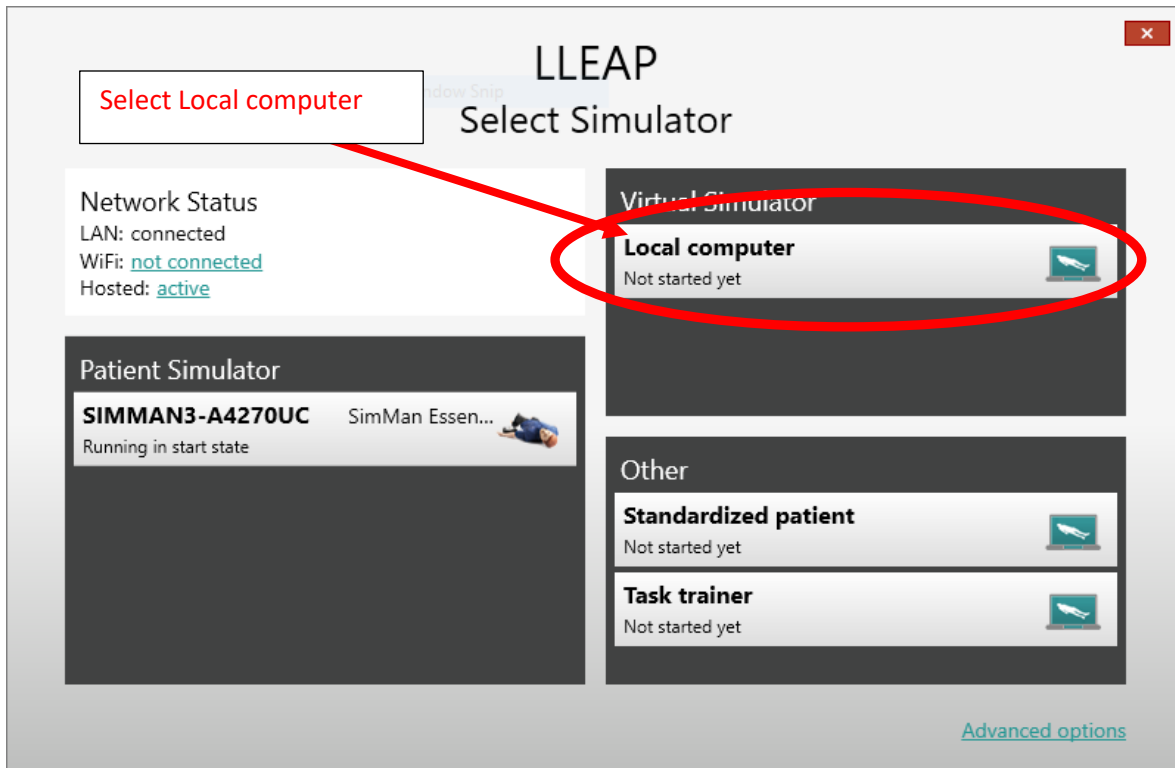


14. The ASL 5000™, when connected, makes an audible “wiggle” as part of its initialization
15. On the “ASL Session Control” or LLEAP “Session Control” windows, click the ► button to start a simulation

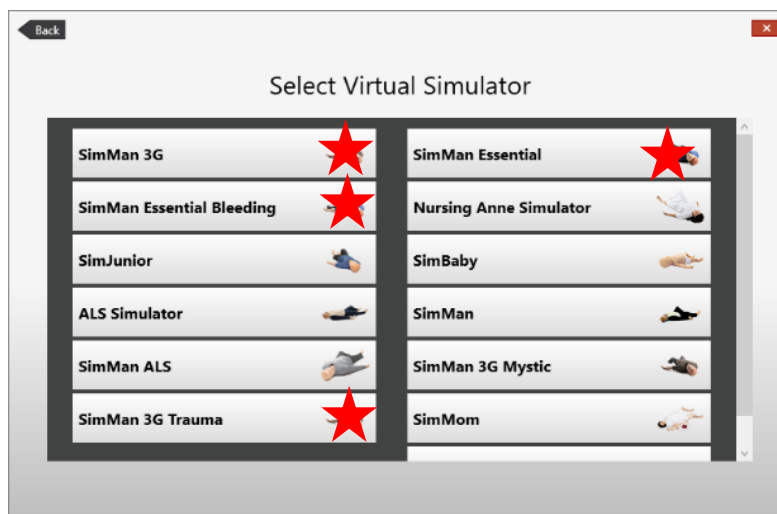
III. Connection Using SimMan 3G Plus as Virtual Simulator (Local Computer) with a Physical ASL 5000 Breathing Simulator

NOTE: LLEAP can control the ASL 5000™ while running as a Virtual Simulator. The same requirements hold for the ASL 5000™ where it must have an IP address provided by any of the methods defined above. The computer running the LLEAP software MUST be connected to the same network as the ASL 5000™

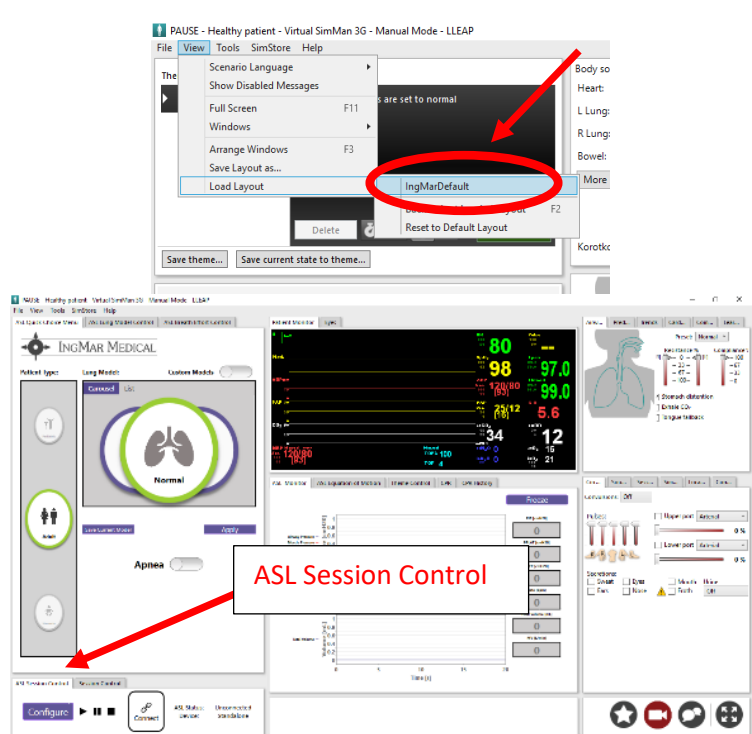
1. Connect an Ethernet cable from the LAN port of the SimMan® to the Ethernet port of ASL 5000™
OR
2. Connect an Ethernet cable from ASL 5000™ to a numbered port on an external router
OR
3. Connect an Ethernet cable from ASL 5000™ to a network (via wall jack, for example)
4. If using the SimMan® as the network in AP mode (using the Virtual Simulator via LLEAP), turn the SimMan® power ON and wait until the system has completed its booting process.
5. **AFTER** the SimMan® is breathing and its eyes are blinking, turn on the ASL 5000™
6. After the red light on the front of the ASL is OFF (~30 seconds), open the LLEAP software
7. When the LLEAP Select Simulator window opens, select the Virtual Simulator (Local computer)



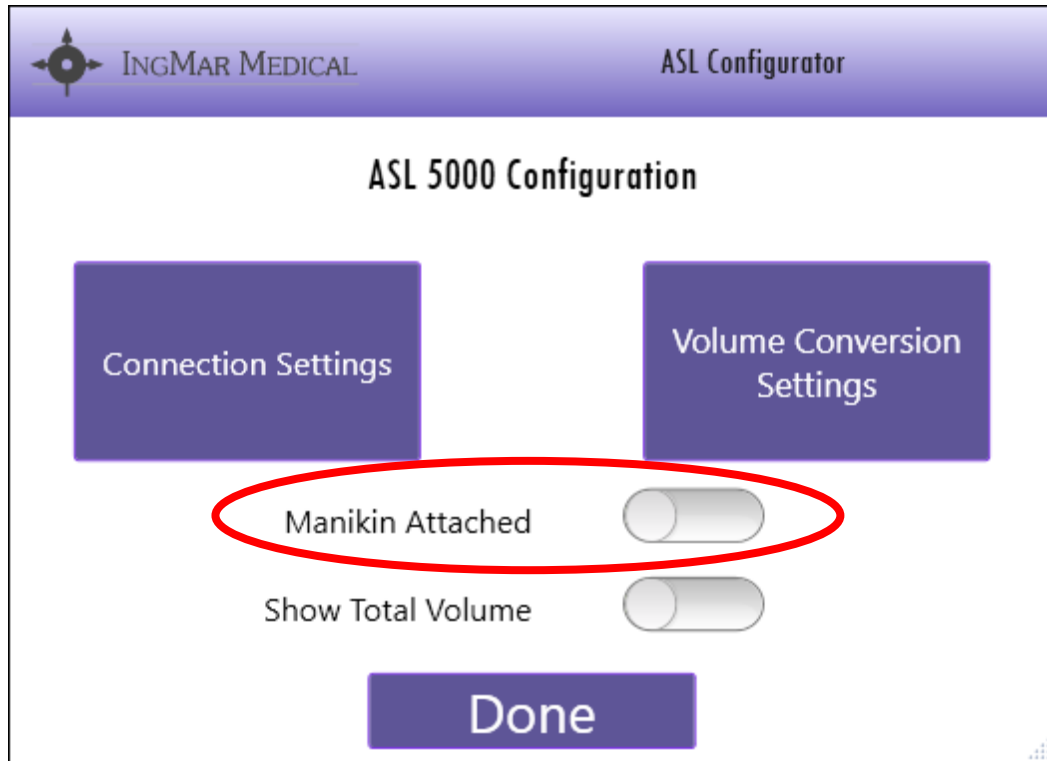
8. Select one of the compatible manikin simulators



9. From the View menu, open the IngMarDefault layout to view the five (5) ASL windows
10. Locate the *ASL Session Control* tab which will share the window with LLEAP's *Session Control*



11. Configure the ASL 5000™ connection Settings in the *ASL Session Control* window in any of the configurations from the options above
12. Ensure that the option 'Manikin Attached' is toggled off to disable compensations for when a manikin is being used



13. The ASL 5000™, when connected, makes an audible “wiggle” as part of its initialization
14. On the “ASL Session Control” or LLEAP “Session Control” windows, click the ► button to start a simulation