

ASL 5000™ Lung Solution for
Nursing Anne Simulator
420-11955

Quick Connect Guide



Laerdal
helping save lives

Part No. 80 31 840 ASL 5000™ Lung Solution for Nursing Anne® Simulator Quick Connect Guide, Rev. 1, © IngMar Medical, LLC. 2020

USA Toll Free: 1-800-583-9910 | International: +1 (412) 441-8228 | support@ingarmed.com

IngMar Medical, LLC is not responsible for translations of its proprietary manuals or guides

Document History

Revision History	Date	Authors
Rev. 1	July 15, 2020	Stephen Huff

Hardware setup

1. Connect Nursing Anne's 15mm tubing to ASL 22mm tubing as seen in below image



Important Notice

- 1. Prior to starting the ASL 5000™ a working Ethernet connection must be established. If the ASL 5000™ is powered before a connection is available, the system will not obtain an IP address and will not be able to connect.**
- 2. The instructions below are based on the order of operations that MUST be followed for a successful connection. Once settings are complete, they are stored in memory and do not need to be reconfigured.**
- 3. The ASL 5000™ Breathing Simulator is compatible with the Nursing Anne™ only with LLEAP version 6.7 and greater.**
- 4. Unlike the SimMan® family of compatible manikins, Nursing Anne™ does not have an internal router that can be placed in AP or Client mode. Nursing Anne™ can operate wirelessly or via a direct connection using an Ethernet cable.**
- 5. If using an external router, IngMar recommends the following minimum specifications:**
 - a. Support 802.11n minimum, 802.11ac preferred**
 - b. At least 2 ethernet ports (not including uplink port)**
 - c. Region-specific power adapter**

I. Connecting Nursing Anne™ Using the ASL 5000™ Serial Number

1. Connect wirelessly or use an Ethernet cable from the Ethernet port on the right side of Nursing Anne™ to one of the following options
 - a. Numbered port on an external router
 - b. Network (via wall jack, for example)
2. Connect an Ethernet cable from the ASL 5000™ to the same option as listed above



NOTE

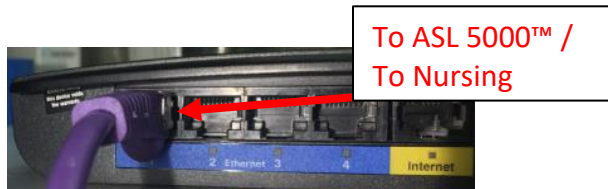
Configure Nursing Anne™ to the same network as the ASL 5000™ using the LLEAP “Simulator Firmware & Network Wizard”



Wireless connection /
To Router or wall jack



To Router or wall jack



To ASL 5000™ /
To Nursing

OR

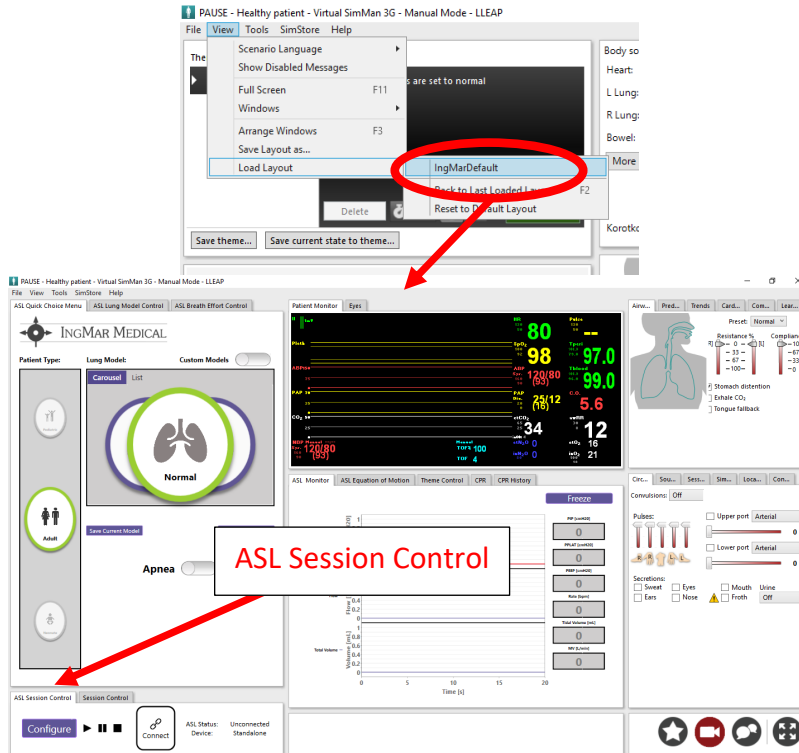


To ASL 5000™ /
To Nursing

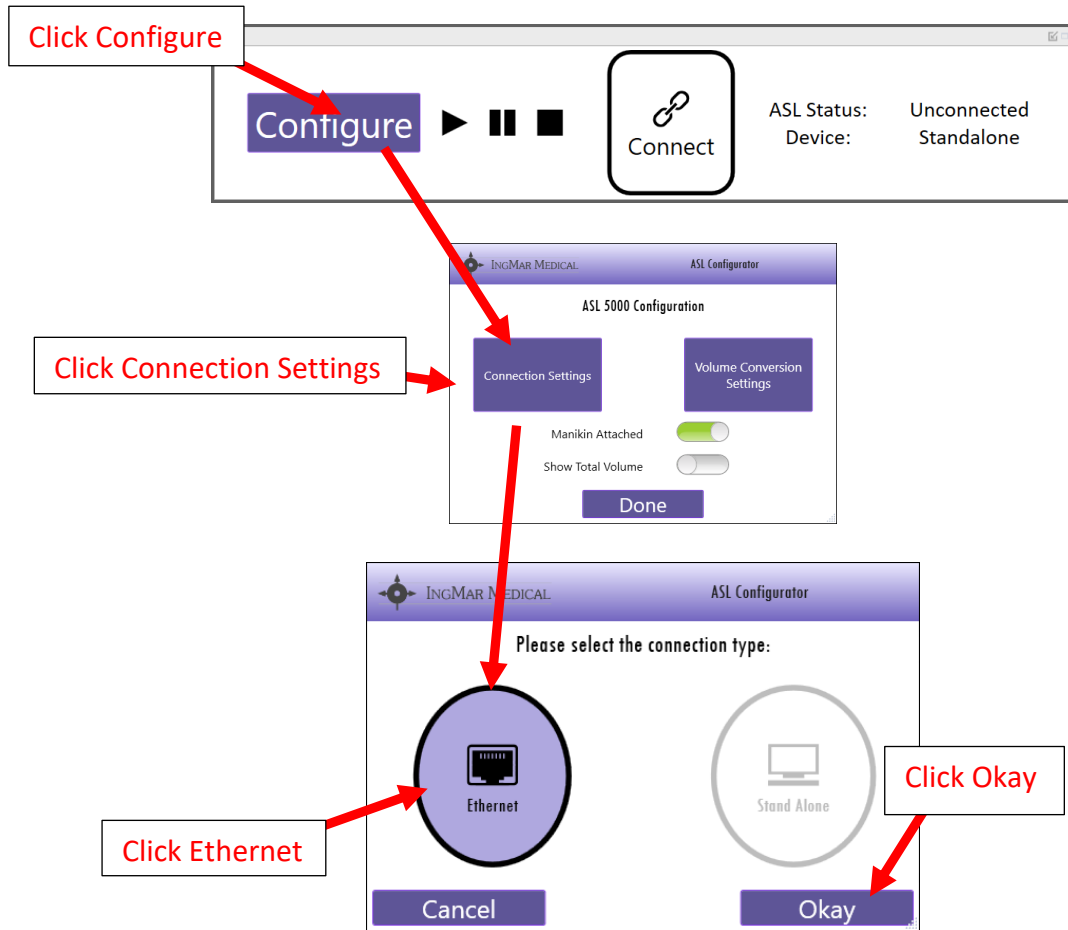
3. Turn Nursing Anne® power ON and wait until the system has completed its initialization process
4. **AFTER** the Nursing Anne® is breathing and her eyes are blinking, turn on the ASL 5000™



5. After the red light on the front of the ASL is OFF (~30 seconds), start the LLEAP software
6. From the View menu, open the IngMarDefault layout to view the six (6) ASL windows
7. Locate the ASL Session Control tab which will share the window with LLEAP's Session Control



8. Configure the ASL 5000™ connection settings in *ASL Session Control* window

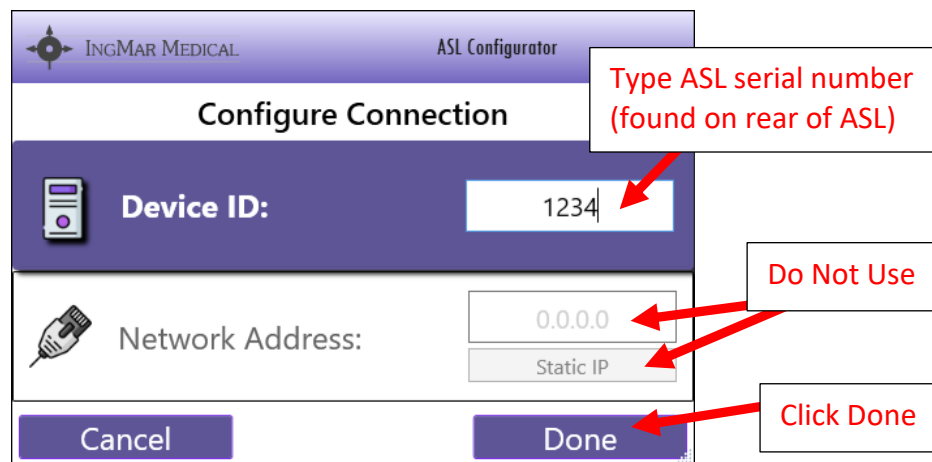


9. Click on **Device ID:**

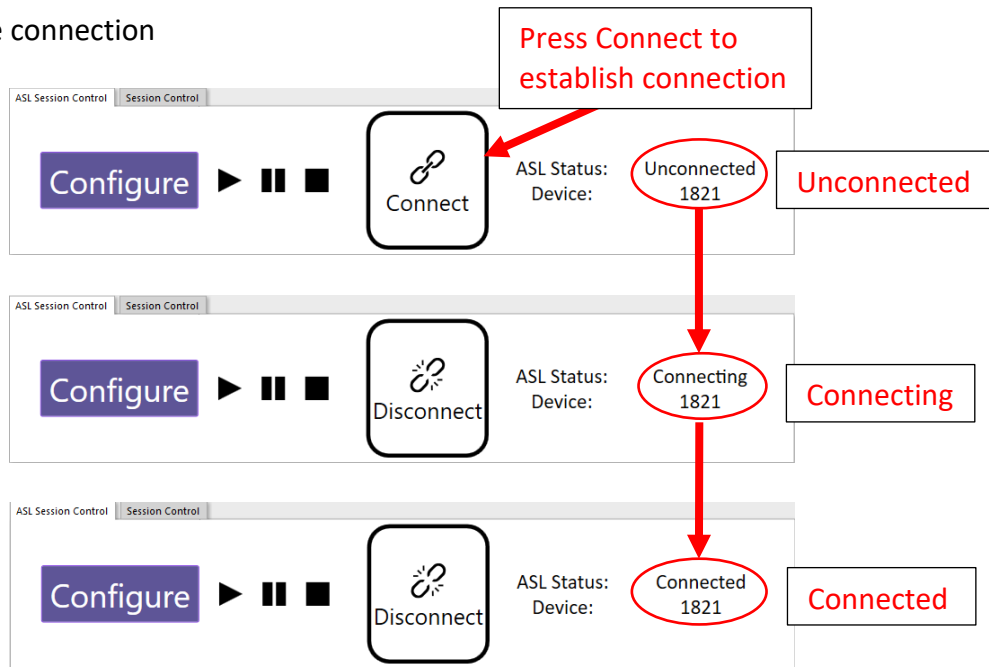
10. Type the ASL serial number into the **Device ID:** field

11. Ignore the **Network Address:** field and ignore the **Static IP** button

12. Click Done



13. Complete the connection



14. The ASL 5000™, when connected, makes an audible “wiggle” as part of its initialization

15. On the “ASL Session Control” or LLEAP “Session Control” windows, click the ► button to start a simulation

II. Connecting Nursing Anne[®] where the ASL 5000[™] requires a unique IP address

1. Connect wirelessly or use an Ethernet cable from the Ethernet port on the right side of the Nursing Anne[™] to one of the following options
 - a. Numbered port on an external router
 - b. Network (via wall jack, for example)
2. Connect an Ethernet cable from the ASL 5000[™] to the same option as listed above



NOTE

Nursing Anne[™] should be configured to the same network as the ASL 5000[™] from the LLEAP Simulator Firmware & Network Wizard



Wireless connection /
To Router or wall jack



To Router or wall jack



To ASL 5000[™] / To
Nursing Anne[™]

OR

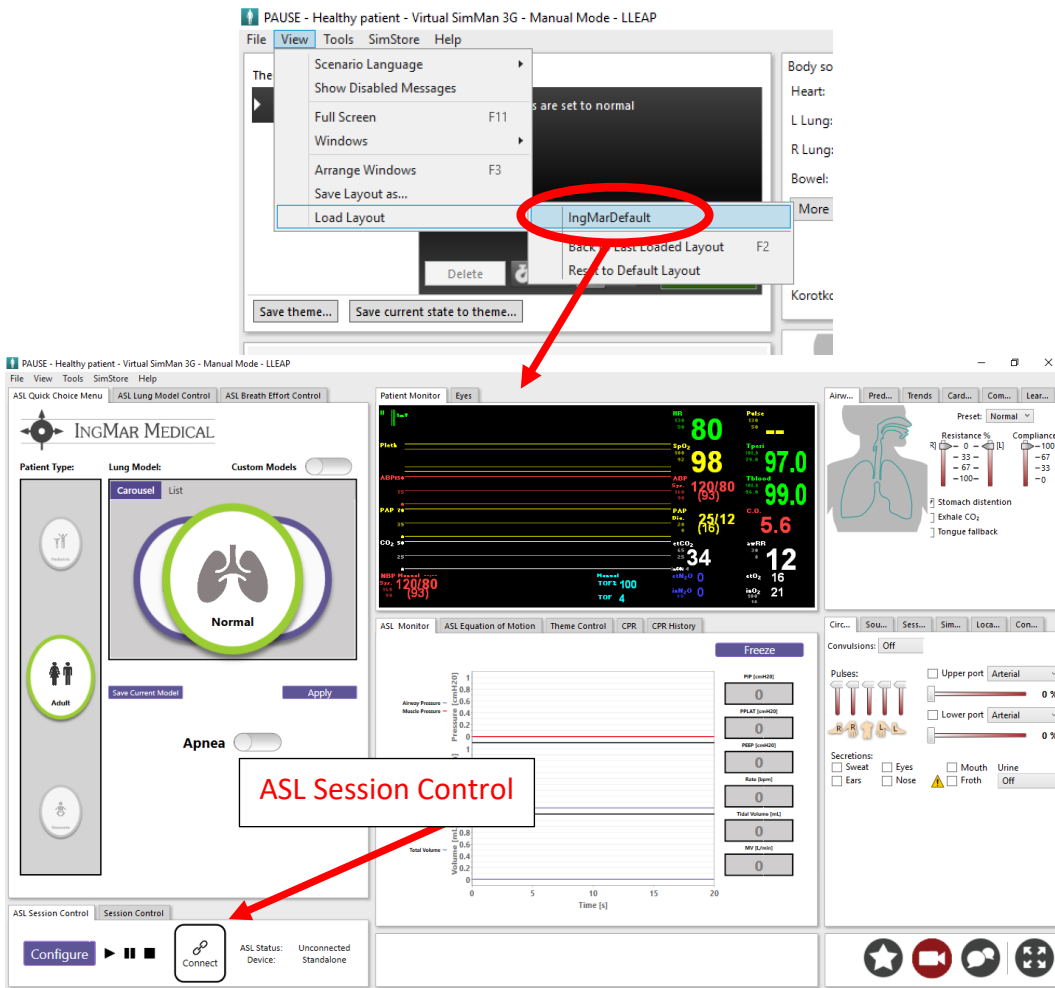


To ASL 5000[™] / To
Nursing Anne[™]

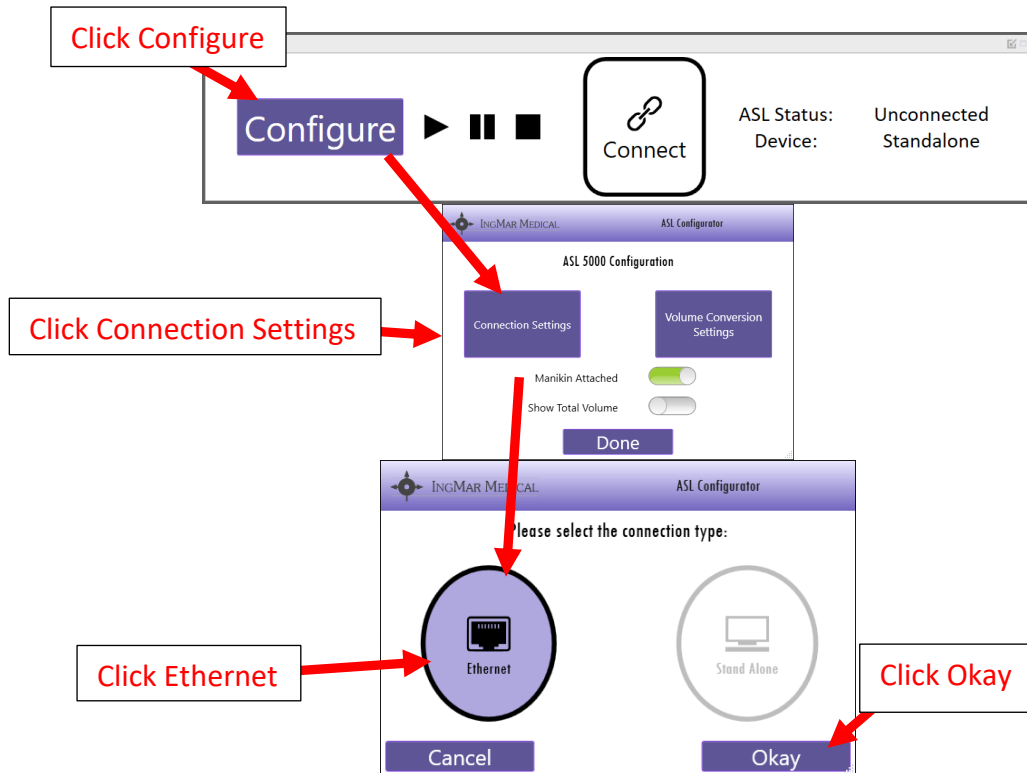
1. Turn Nursing Anne’s™ power ON and wait until she has completed the booting process
2. **AFTER** the Nursing Anne™ is breathing and her eyes are blinking, turn on the ASL 5000™



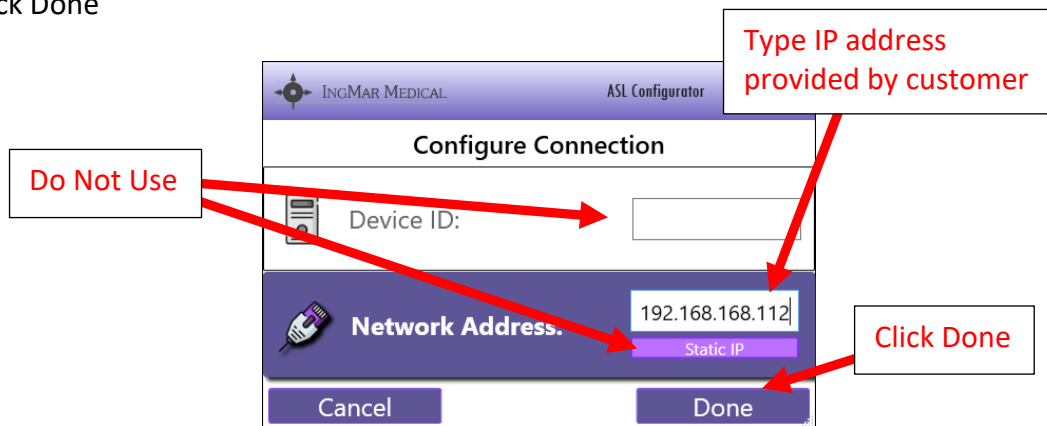
3. After the red light on the front of the ASL is OFF (~30 seconds), open the LLEAP software in Manual Mode
4. From the View menu, open the IngMarDefault layout to view the five (5) ASL windows
5. Locate the ASL Session Control tab which will share the window with LLEAP’s Session Control



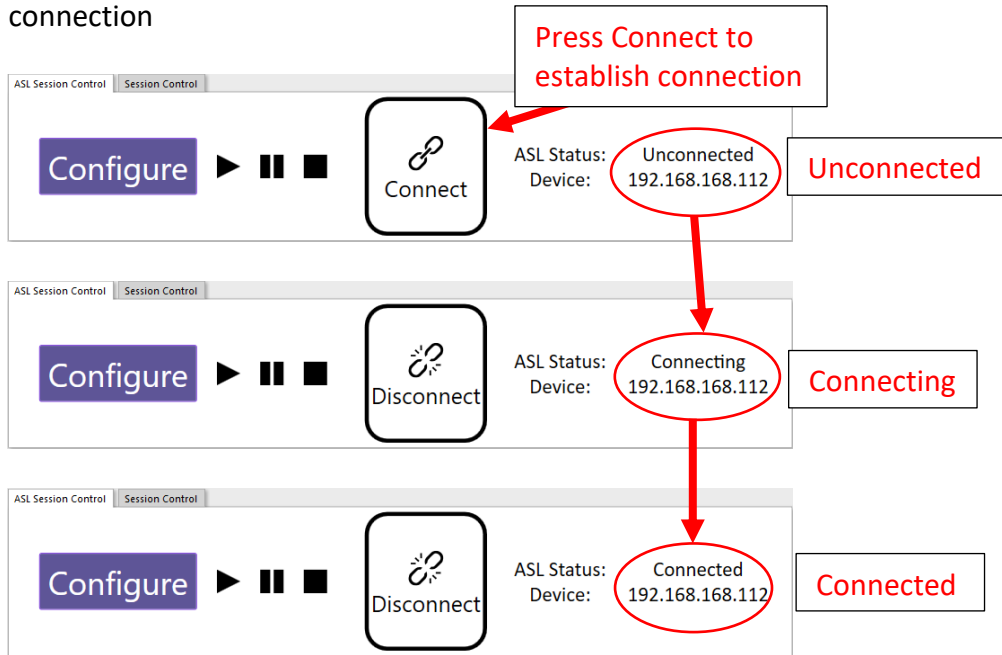
6. Configure the ASL 5000™ connection settings in the *ASL Session Control* window



7. Make sure the switch is set to **Use IP**
8. Type the IP address provided by the customer into the **IP:** field
9. Ignore the **ID:** field and ignore the *Static IP Config* button
10. Click Done



11. Complete the connection



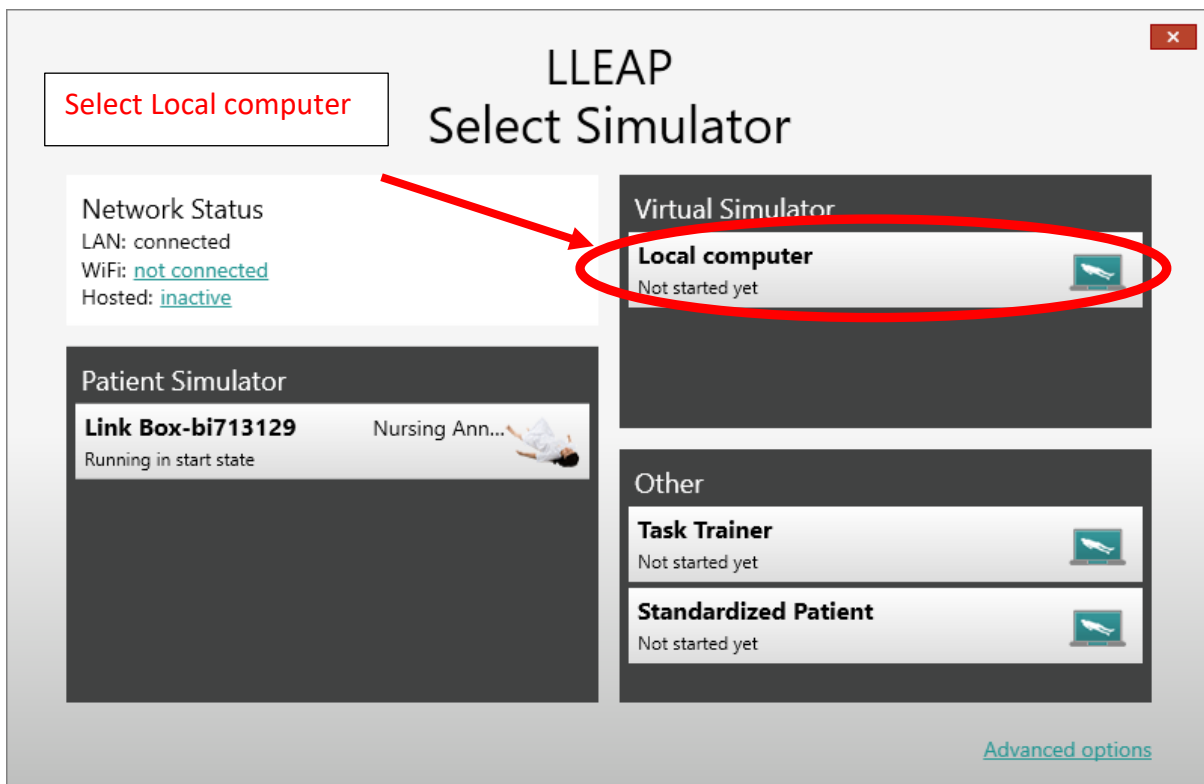
12. The ASL 5000™, when connected, makes an audible “wiggle” as part of its initialization

13. On the “ASL Session Control” or LLEAP “Session Control” windows, click the ► button to start a simulation

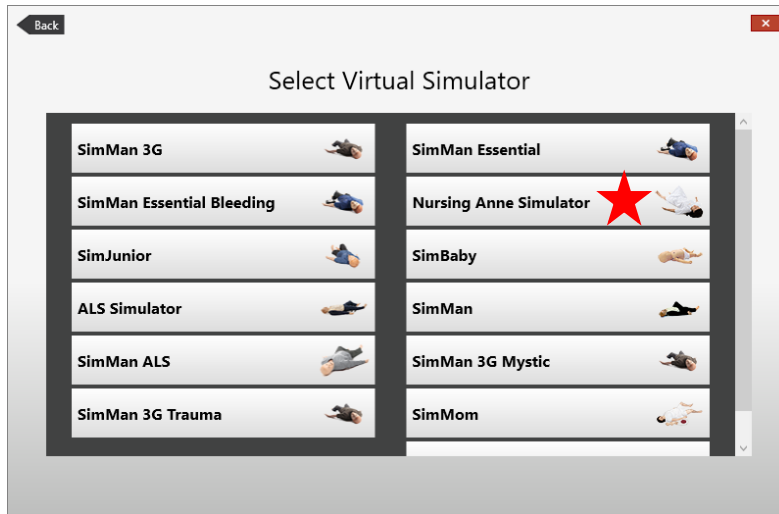
III. Connection Using Nursing Anne[®] as Virtual Simulator (Local Computer) with a Physical ASL 5000[™] Breathing Simulator

NOTE: LLEAP can control the ASL 5000[™] while running as a Virtual Simulator. The ASL 5000[™] must have an IP address provided by any of the methods defined above. The computer running the LLEAP software MUST be connected to the same network as the ASL 5000[™] (same IP subnet)

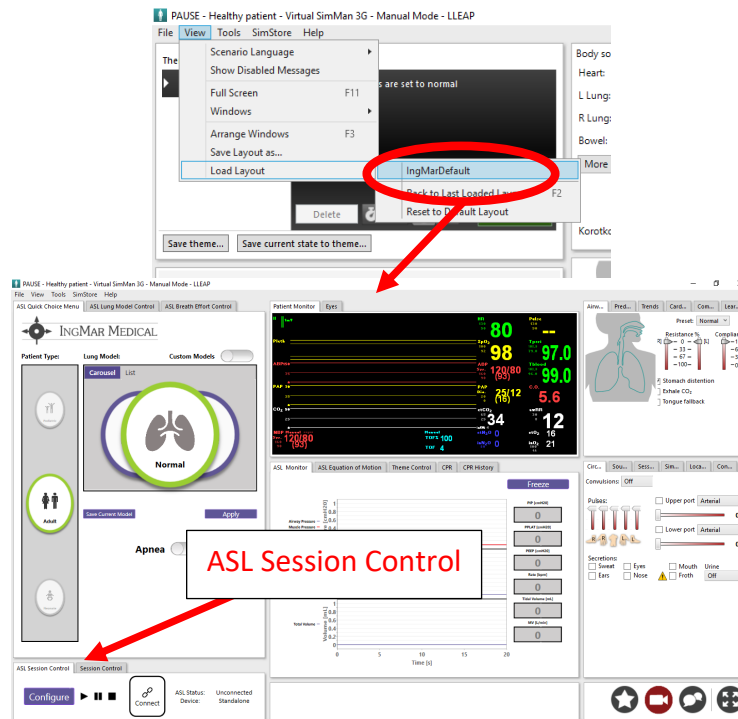
1. Connect an Ethernet cable from ASL 5000[™] to a numbered port on an external router
OR
2. Connect an Ethernet cable from ASL 5000[™] to a network (via wall jack, for example)
3. Turn on the ASL 5000[™]
4. **AFTER** the red light on the front of the ASL 5000[™] is OFF (~30 seconds), open the LLEAP software
5. When the LLEAP Select Simulator window opens, in the Virtual Simulator window, select Local computer



6. Select Nursing Anne manikin simulator

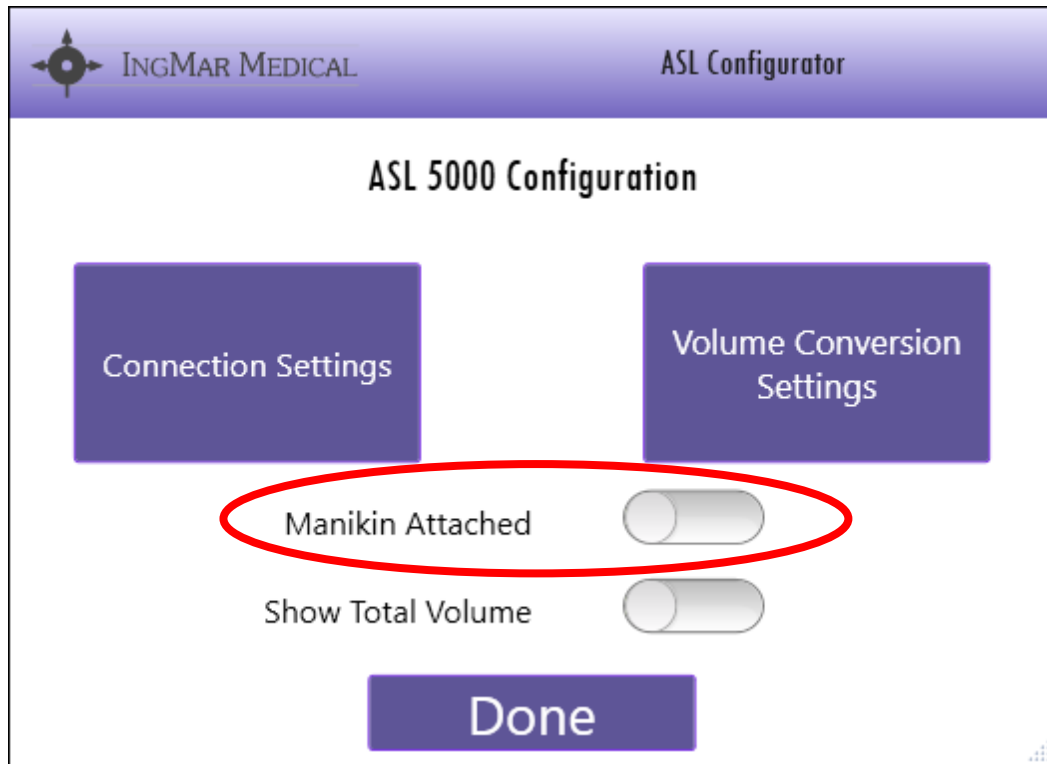


- 7. From the View menu, open the IngMarDefault layout to view the five (6) ASL windows
- 8. Locate the ASL Session Control tab which will share the window with LLEAP's Session Control



- 9. Configure the ASL 5000™ connection Settings in the ASL Session Control window in any of the configurations from the options above

10. Ensure that the option 'Manikin Attached' is toggled off to disable compensations for when a manikin is being used



11. The ASL 5000™, when connected, makes an audible “wiggle” as part of its initialization
12. On the “ASL Session Control” or LLEAP “Session Control” windows, click the ► button to start a simulation