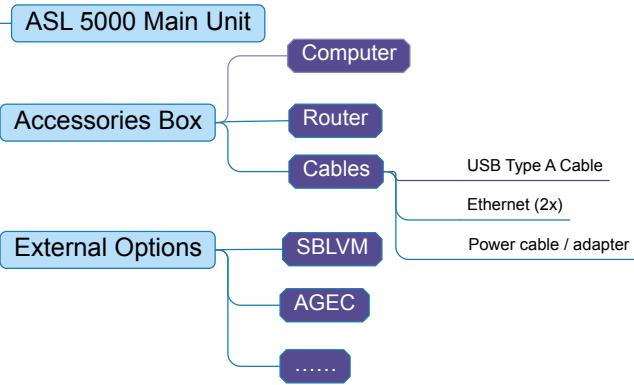
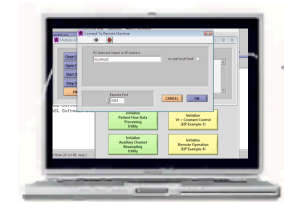


ASL 5000 Quick Reference Setup Guide

STEP 1 Check that you have all components



STEP 2 Make all connections



- Connect PC and ASL to Router with Ethernet patch cables (use ports 1..4, NOT the "Internet" port!)
- Connect all 3 devices to line power
- Connect ASL USB Type A Cable to PC

OR Use USB Type A Cable

STEP 3 Start the system

Switch ASL 5000 "ON"

Green power switch in the back of unit is ON (lit). Blue LED on front panel also lights up.



IMPORTANT
Make sure motor is enabled!
(disable-switch in the depressed position, red light in the switch will be OFF 20 s after power-up)



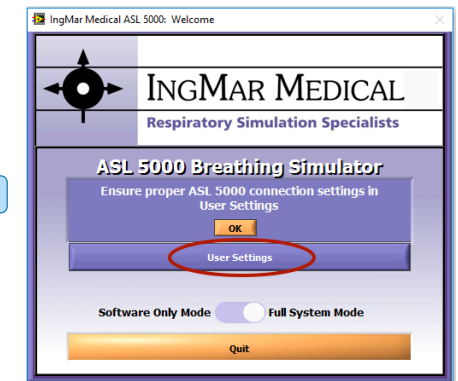
Start the PC

STEP 4 Launch the software

Click SW 3.6 icon on desktop or in the Windows "Start" menu



Select User Settings



In the "ASL User Settings" window, select either "Ethernet" and enter the ASL Serial # /IP Address or select the correct COM port (COM 1-8)

Select "Close" and then "Save"

